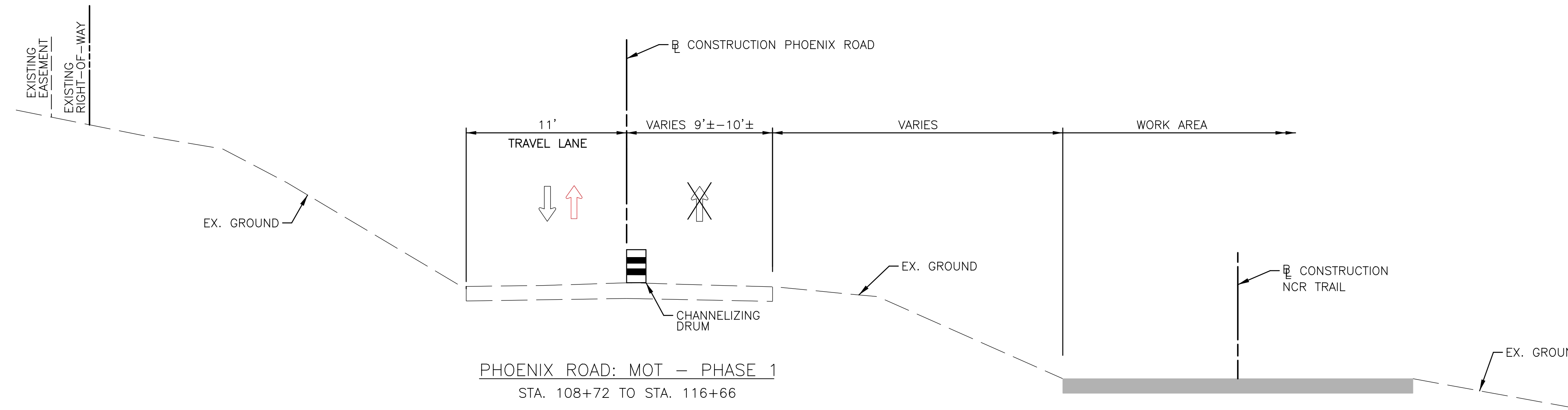
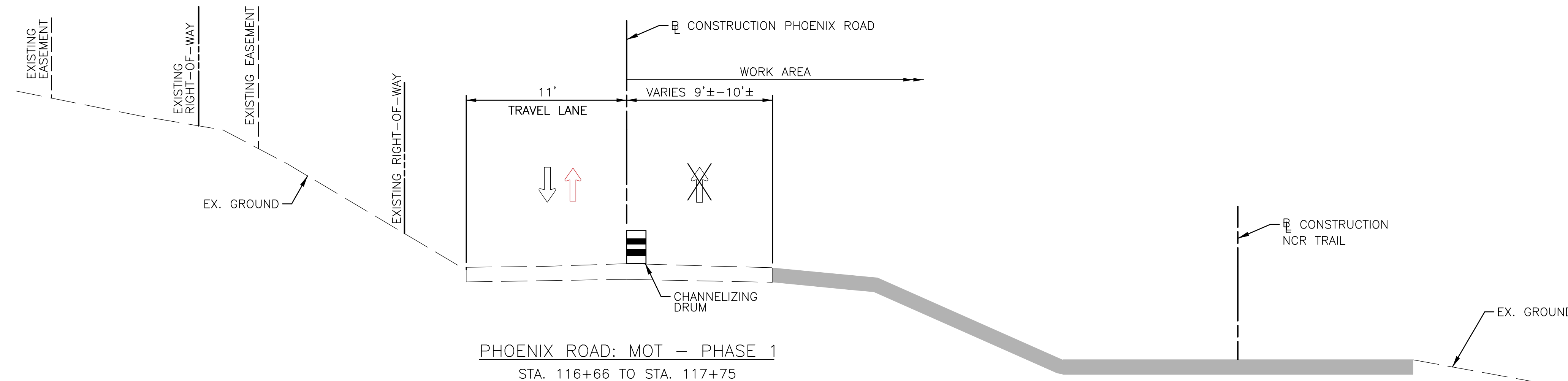
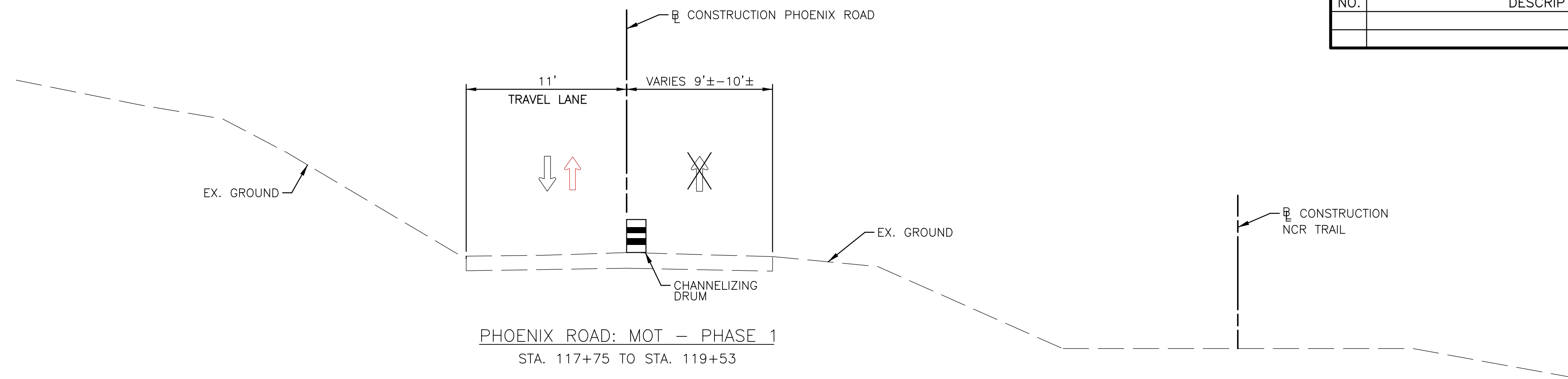
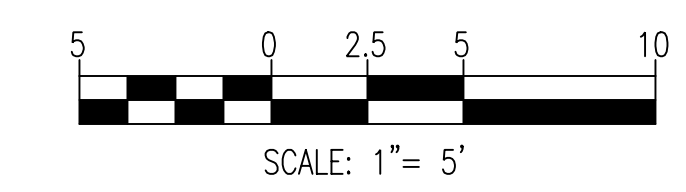


REVISIONS			
NO.	DESCRIPTION	DATE	BY



ONE LANE TWO-WAY OPERATION (SIGNALIZED)
~~ONE LANE OPERATION~~ — FOR USE DURING BRIDGE DEMOLITION,
 CONSTRUCTION OF NEW BRIDGE AND RETAINING WALL

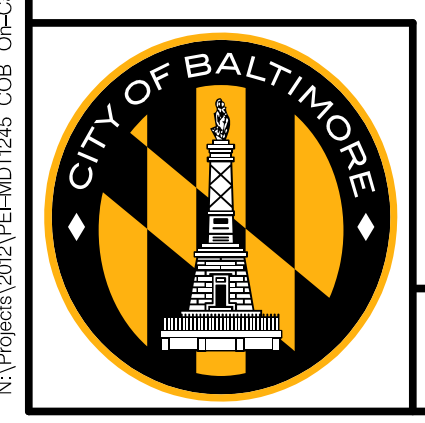
PRELIMINARY MT-01



PRIME AE
 PRIME AE Group, Inc.
 5521 Research Park Drive | Suite 300
 Baltimore, Maryland 21228
 P: 410 654 3790 F: 410 654 3791

CITY OF BALTIMORE
 DEPARTMENT OF TRANSPORTATION
 CONTRACT NO. TR10003
 SHA NO. BC 410030
 F.A.P. NO. STBG-3(640)E
 REPLACEMENT OF BRIDGE NO. BC 6507
 ON PHOENIX ROAD
 OVER GUNPOWDER FALLS
 MAINTENANCE OF TRAFFIC — TYPICAL SECTION

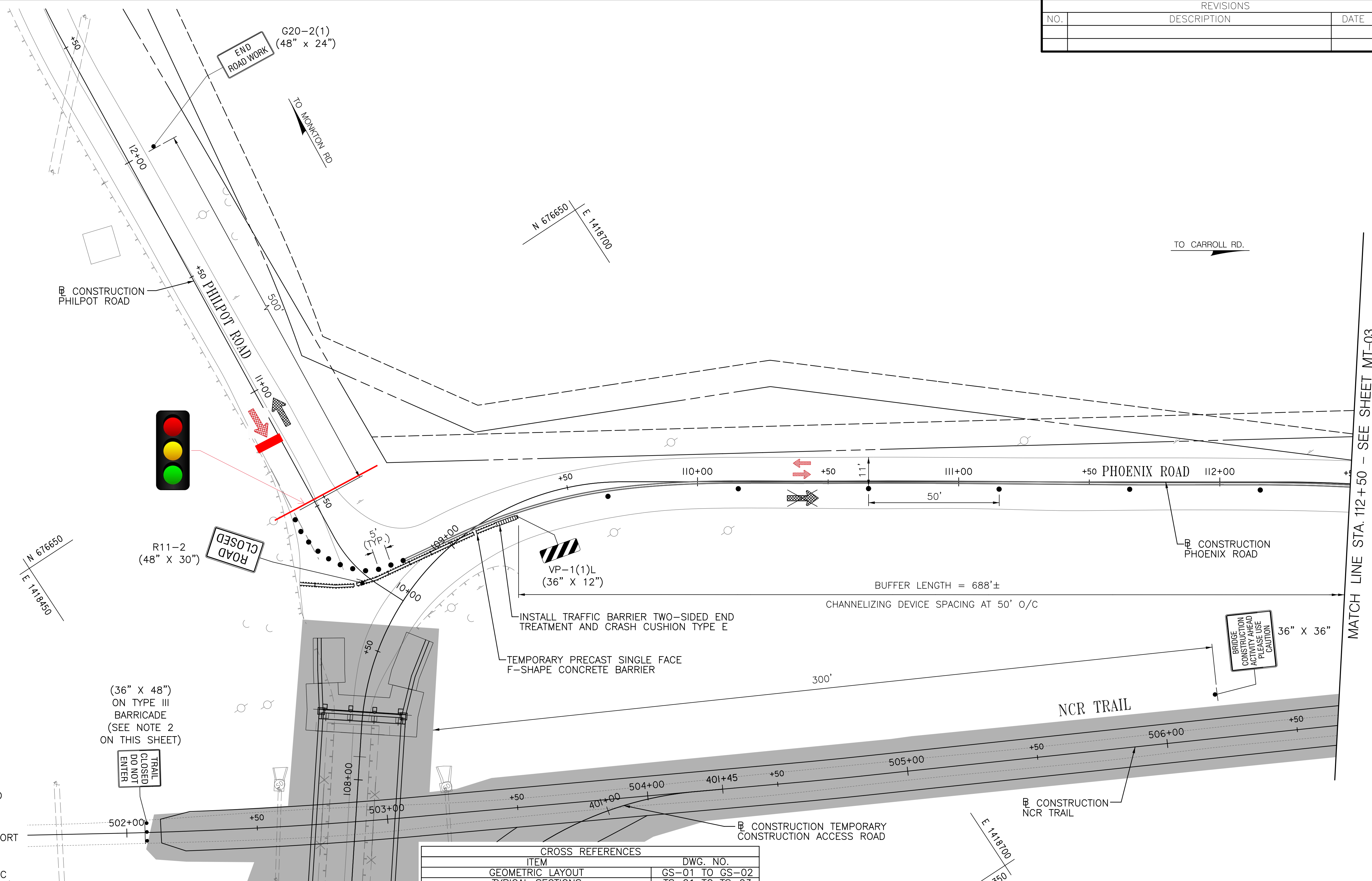
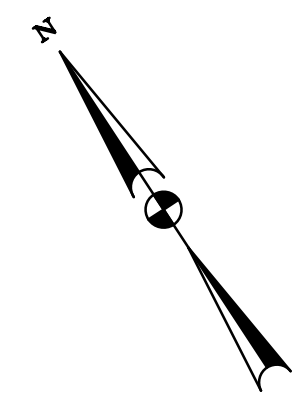
SCALE: 1"=5' DATE: FEBRUARY 2021
 TRANSPORTATION ENGINEERING DIVISION | SHEET 29 OF 163



DRAWN BY: AM/MB
 EXAMINED BY: KAM/ASJ

N:\Projects\2021\PEL-MOT1245_C08_OncallDesign_JV_w_H&V_Transportation\2_Roadways\Drawings\Drawings\MT-001_Phenix_Rd.dwg

REVISIONS			
NO.	DESCRIPTION	DATE	BY



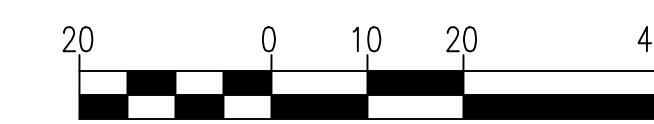
MAINTENANCE OF TRAFFIC LEGEND

- TRAFFIC FLOW ARROWS/LANE OPEN
- TRAFFIC FLOW ARROWS/LANE CLOSED
- WORK AREA
- TEMPORARY TRAFFIC SIGN AND SUPPORT
- TYPE III BARRICADE
- DRUMS FOR MAINTENANCE OF TRAFFIC (DRUM SPACING AS SHOWN ON PLANS)
- TRAFFIC BARRIER TWO-SIDED END TREATMENT AND CRASH CUSHION TYPE E FOR 30 MPH
- TEMPORARY PRECAST SINGLE FACE F-SHAPE CONCRETE BARRIER
- SIGN INSTALLED IN CURRENT PHASE

NOTES:

1. THE CONTRACTOR SHALL IMPLEMENT ROADWAY DETOUR SIGNAGE CONCURRENTLY WITH PHASE 1. THE CONTRACTOR SHALL NOT HAVE DETOUR SIGN CONFLICTIONS WHILE THE ONE WAY TRAFFIC OPERATION ON PHOENIX ROAD AND PHILPOT ROAD REMAINS OPEN. REFER TO DWG. TP-01 TO TP-07 FOR ADDITIONAL INFORMATION.
2. THE CONTRACTOR SHALL UNCOVER THE "TRAIL CLOSED DO NOT ENTER" SIGN AND CLOSE THE NCR TRAIL TO TRAIL USERS DURING INTERIM CLOSURE PERIODS FOR FACILITATING THE CONSTRUCTION ACTIVITIES. AT THE END OF THE INTERIM CLOSURE PERIOD, THE CONTRACTOR SHALL REMOVE ALL EQUIPMENTS AND MATERIALS WITHIN AND SURROUNDING THE NCR TRAIL PRIOR TO OPENING THE TRAIL. THE CONTRACTOR SHALL COVER THE "TRAIL CLOSED DO NOT ENTER" SIGN AND OPEN THE NCR TRAIL.

CROSS REFERENCES	
ITEM	DWG. NO.
GEOMETRIC LAYOUT	GS-01 TO GS-02
TYPICAL SECTIONS	TS-01 TO TS-03
SUPERELEVATION DETAILS	SE-01
PAVEMENT DETAILS	PD-01
TEMPORARY ROADWAY PLAN	TR-01 TO TR-03
ROADWAY PLAN	PS-01 TO PS-07
TEMPORARY ROADWAY PROFILE	PR-01
ROADWAY PROFILES	PR-02 TO PR-03
MISCELLANEOUS DETAILS	MD-01 TO MD-03
STORM DRAIN PROFILE	DP-01
STORM DRAIN SCHEDULE	DS-01
MAINTENANCE OF TRAFFIC PLAN	MT-01 TO MT-06
DETOUR PLANS (NOTES, PLAN, AND SIGN DETAILS)	TP-01 TO TP-09
SIGNING & PAVEMENT MARKING PLAN	SN-01 TO SN-08
CONDUIT PLANS (NOTES, PLAN, AND CONDUIT DETAILS)	UT-01 TO UT-12
GRADING, EROSION AND SEDIMENT CONTROL	SC-01 TO SC-14
DRAINAGE AREA PLAN	DA-01 TO DA-04
WATER QUALITY MAP	WQ-01
LANDSCAPING PLAN	LD-01 TO LD-10



SCALE: 1" = 20'

PRIME AE
 PRIME AE Group, Inc.
 5521 Research Park Drive | Suite 300
 Baltimore, Maryland 21228
 P: 410 654 3790 F: 410 654 3791

PRELIMINARY

CITY OF BALTIMORE
 DEPARTMENT OF TRANSPORTATION
 CONTRACT NO. TR10003
 SHA NO. BC 410030
 F.A.P. NO. STBG-3(640)E
 REPLACEMENT OF BRIDGE NO. BC 6507
 ON PHOENIX ROAD
 OVER GUNPOWDER FALLS
 MAINTENANCE OF TRAFFIC PLAN - PHASE 1
 STA. 107+75 TO STA.112+50

N:\Projects\2021\PEL-MDT\245_C08_01-Call\Drawings - JV w/ H&M\Transportation\2_Baltimore\Drawings\04-01-2022_Prelim_R1.dwg
 AM/MB
 KAM/ASJ

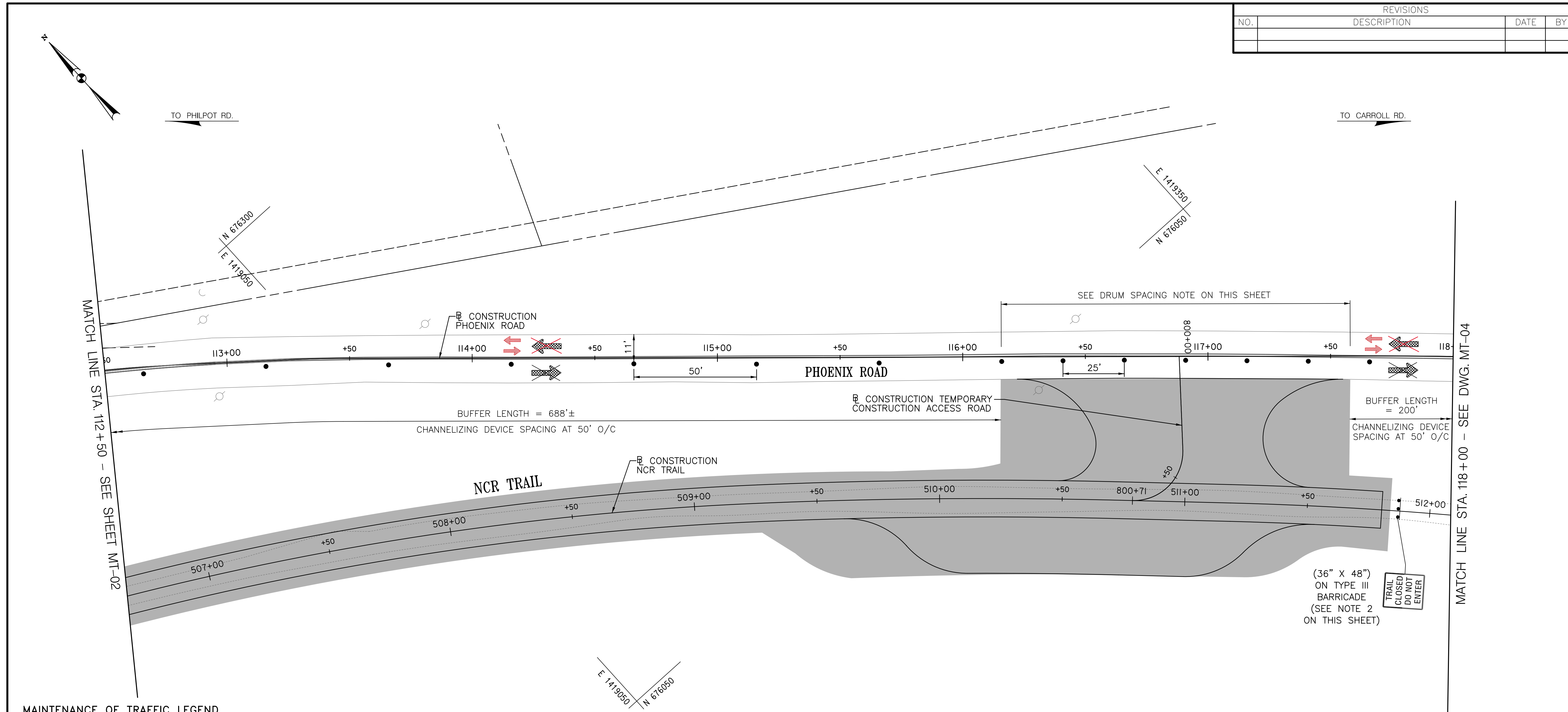


DRAWN BY: AM/MB
 EXAMINED BY: KAM/ASJ

MATCH LINE STA. 112+50 - SEE SHEET MT-03

MT-02

REVISIONS			
NO.	DESCRIPTION	DATE	BY



- MAINTENANCE OF TRAFFIC LEGEND**
- TRAFFIC FLOW ARROWS/LANE OPEN
 - TRAFFIC FLOW ARROWS/LANE CLOSED
 - WORK AREA
 - TEMPORARY TRAFFIC SIGN AND SUPPORT
 - TYPE III BARRICADE
 - DRUMS FOR MAINTENANCE OF TRAFFIC (DRUM SPACING AS SHOWN ON PLANS)
 - TRAFFIC BARRIER TWO-SIDED END TREATMENT AND CRASH CUSHION TYPE E FOR 30 MPH
 - TEMPORARY PRECAST SINGLE FACE F-SHAPE CONCRETE BARRIER
 - SIGN INSTALLED IN CURRENT PHASE

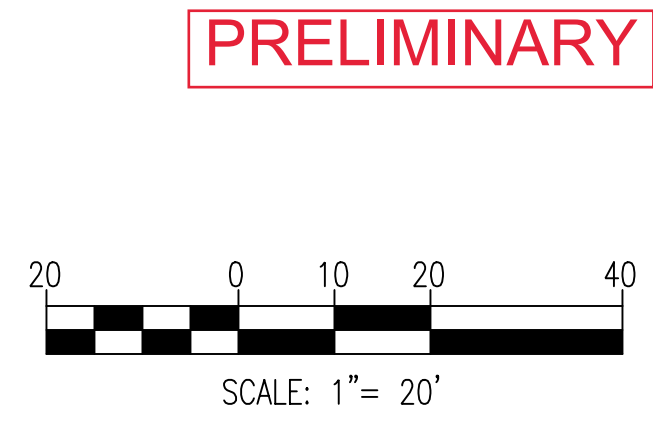
- NOTES:**
1. THE CONTRACTOR SHALL IMPLEMENT ROADWAY DETOUR SIGNAGE CONCURRENTLY WITH PHASE 1. THE CONTRACTOR SHALL NOT HAVE DETOUR SIGN CONFLICTIONS WHILE THE ONE WAY TRAFFIC OPERATION ON PHOENIX ROAD AND PHILPOT ROAD REMAINS OPEN. REFER TO DWG. TP-01 TO TP-07 FOR ADDITIONAL INFORMATION.
 2. THE CONTRACTOR SHALL UNCOVER THE "TRAIL CLOSED DO NOT ENTER" SIGN AND CLOSE THE NCR TRAIL TO TRAIL USERS DURING INTERIM CLOSURE PERIODS FOR FACILITATING THE CONSTRUCTION ACTIVITIES. AT THE END OF THE INTERIM CLOSURE PERIOD, THE CONTRACTOR SHALL REMOVE ALL EQUIPMENTS AND MATERIALS WITHIN AND SURROUNDING THE NCR TRAIL PRIOR TO OPENING THE TRAIL. THE CONTRACTOR SHALL COVER THE "TRAIL CLOSED DO NOT ENTER" SIGN AND OPEN THE NCR TRAIL.

CROSS REFERENCES	
ITEM	DWG. NO.
GEOMETRIC LAYOUT	GS-01 TO GS-02
TYPICAL SECTIONS	TS-01 TO TS-03
SUPERELEVATION DETAILS	SE-01
PAVEMENT DETAILS	PD-01
TEMPORARY ROADWAY PLAN	TR-01 TO TR-03
ROADWAY PLAN	PS-01 TO PS-07
TEMPORARY ROADWAY PROFILE	PR-01
ROADWAY PROFILES	PR-02 TO PR-03
MISCELLANEOUS DETAILS	MD-01 TO MD-03
STORM DRAIN PROFILE	DP-01
STORM DRAIN SCHEDULE	DS-01
MAINTENANCE OF TRAFFIC PLAN	MT-01 TO MT-06
DETOUR PLANS (NOTES, PLAN, AND SIGN DETAILS)	TP-01 TO TP-09
SIGNING & PAVEMENT MARKING PLAN	SN-01 TO SN-08
CONDUIT PLANS (NOTES, PLAN, AND CONDUIT DETAILS)	UT-01 TO UT-12
GRADING, EROSION AND SEDIMENT CONTROL	SC-01 TO SC-14
DRAINAGE AREA PLAN	DA-01 TO DA-04
WATER QUALITY MAP	WQ-01
LANDSCAPING PLAN	LD-01 TO LD-10

- DRUM SPACING NOTES:**
1. THE CONTRACTOR SHALL USE DRUM SPACING OF 25' WHEN CONSTRUCTING THE TEMPORARY CONSTRUCTION ACCESS ROAD IN THE BEGINNING OF PHASE 1.
 2. THE CONTRACTOR SHALL USE DRUM SPACING OF 50' WHEN CONSTRUCTION OF THE TEMPORARY ACCESS ROAD IS COMPLETED AND READY FOR USE FOR CONSTRUCTION VEHICLE ACCESS.
 3. THE CONTRACTOR SHALL USE DRUM SPACING OF 25' WHEN REMOVING THE TEMPORARY CONSTRUCTION ACCESS ROAD AT THE END OF PHASE 1.



DRAWN BY: AM/MB
EXAMINED BY: KAM/ASJ



PRIME AE
PRIME AE Group, Inc.
5521 Research Park Drive | Suite 300
Baltimore, Maryland 21228
P: 410 654 3790 F: 410 654 3791

PRELIMINARY

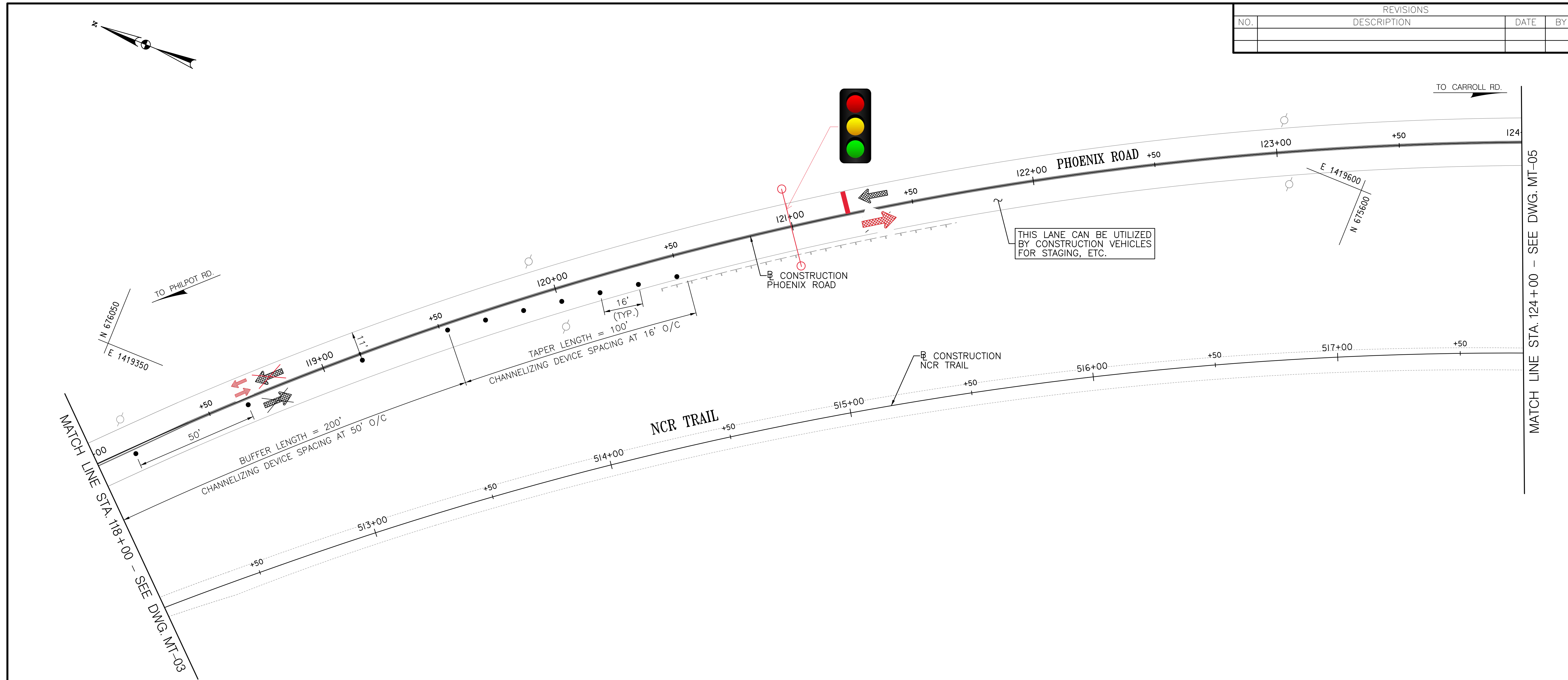
CITY OF BALTIMORE
DEPARTMENT OF TRANSPORTATION
CONTRACT NO. TR10003
SHA NO. BC 410030
F.A.P. NO. STBG-3(640)E

REPLACEMENT OF BRIDGE NO. BC 6507
ON PHOENIX ROAD
OVER GUNPOWDER FALLS
MAINTENANCE OF TRAFFIC PLAN - PHASE 1
STA. 112+50 TO STA.118+00

SCALE: 1"=20' DATE: FEBRUARY 2021
TRANSPORTATION ENGINEERING DIVISION SHEET 31 OF 163

N:\Projects\2021\PEL-MT-03-COB-COB-Call-Design-JV-w-H&A\7-Transportation\2-Baltimore\Drawings\MT-03-Phase1_R4.dwg

REVISIONS			
NO.	DESCRIPTION	DATE	BY

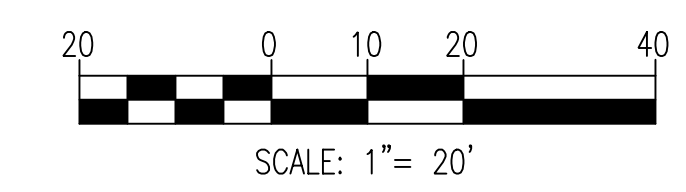
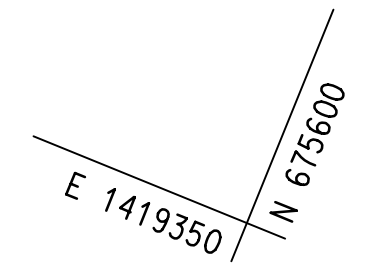


- MAINTENANCE OF TRAFFIC LEGEND**
- TRAFFIC FLOW ARROWS/LANE OPEN
 - TRAFFIC FLOW ARROWS/LANE CLOSED
 - WORK AREA
 - TEMPORARY TRAFFIC SIGN AND SUPPORT
 - TYPE III BARRICADE
 - DRUMS FOR MAINTENANCE OF TRAFFIC (DRUM SPACING AS SHOWN ON PLANS)
 - TRAFFIC BARRIER TWO-SIDED END TREATMENT AND CRASH CUSHION TYPE E FOR 30 MPH
 - TEMPORARY PRECAST SINGLE FACE F-SHAPE CONCRETE BARRIER
 - SIGN INSTALLED IN CURRENT PHASE

NOTES:

- THE CONTRACTOR SHALL IMPLEMENT ROADWAY DETOUR SIGNAGE CONCURRENTLY WITH PHASE 1. THE CONTRACTOR SHALL NOT HAVE DETOUR SIGN CONFLICTIONS WHILE THE ONE WAY TRAFFIC OPERATION ON PHOENIX ROAD AND PHILPOT ROAD REMAINS OPEN. REFER TO DWG. TP-01 TO TP-07 FOR ADDITIONAL INFORMATION.
- THE CONTRACTOR SHALL UNCOVER THE "TRAIL CLOSED DO NOT ENTER" SIGN AND CLOSE THE NCR TRAIL TO TRAIL USERS DURING INTERIM CLOSURE PERIODS FOR FACILITATING THE CONSTRUCTION ACTIVITIES. AT THE END OF THE INTERIM CLOSURE PERIOD, THE CONTRACTOR SHALL REMOVE ALL EQUIPMENTS AND MATERIALS WITHIN AND SURROUNDING THE NCR TRAIL PRIOR TO OPENING THE TRAIL. THE CONTRACTOR SHALL COVER THE "TRAIL CLOSED DO NOT ENTER" SIGN AND OPEN THE NCR TRAIL.

CROSS REFERENCES	
ITEM	DWG. NO.
GEOMETRIC LAYOUT	GS-01 TO GS-02
TYPICAL SECTIONS	TS-01 TO TS-03
SUPERELEVATION DETAILS	SE-01
PAVEMENT DETAILS	PD-01
TEMPORARY ROADWAY PLAN	TR-01 TO TR-03
ROADWAY PLAN	PS-01 TO PS-07
TEMPORARY ROADWAY PROFILE	PR-01
ROADWAY PROFILES	PR-02 TO PR-03
MISCELLANEOUS DETAILS	MD-01 TO MD-03
STORM DRAIN PROFILE	DP-01
STORM DRAIN SCHEDULE	DS-01
MAINTENANCE OF TRAFFIC PLAN	MT-01 TO MT-06
DETOUR PLANS (NOTES, PLAN, AND SIGN DETAILS)	TP-01 TO TP-09
SIGNING & PAVEMENT MARKING PLAN	SN-01 TO SN-08
CONDUIT PLANS (NOTES, PLAN, AND CONDUIT DETAILS)	UT-01 TO UT-12
GRADING, EROSION AND SEDIMENT CONTROL	SC-01 TO SC-14
DRAINAGE AREA PLAN	DA-01 TO DA-04
WATER QUALITY MAP	WQ-01
LANDSCAPING PLAN	LD-01 TO LD-10



PRIME AE
 PRIME AE Group, Inc.
 5521 Research Park Drive | Suite 300
 Baltimore, Maryland 21228
 P: 410 654 3790 F: 410 654 3791

PRELIMINARY

MT-04

CITY OF BALTIMORE
 DEPARTMENT OF TRANSPORTATION
 CONTRACT NO. TR10003
 SHA NO. BC 410030
 F.A.P. NO. STBG-3(640)E
 REPLACEMENT OF BRIDGE NO. BC 6507
 ON PHOENIX ROAD
 OVER GUNPOWDER FALLS
 MAINTENANCE OF TRAFFIC PLAN - PHASE 1
 STA. 118+00 TO STA. 124+00

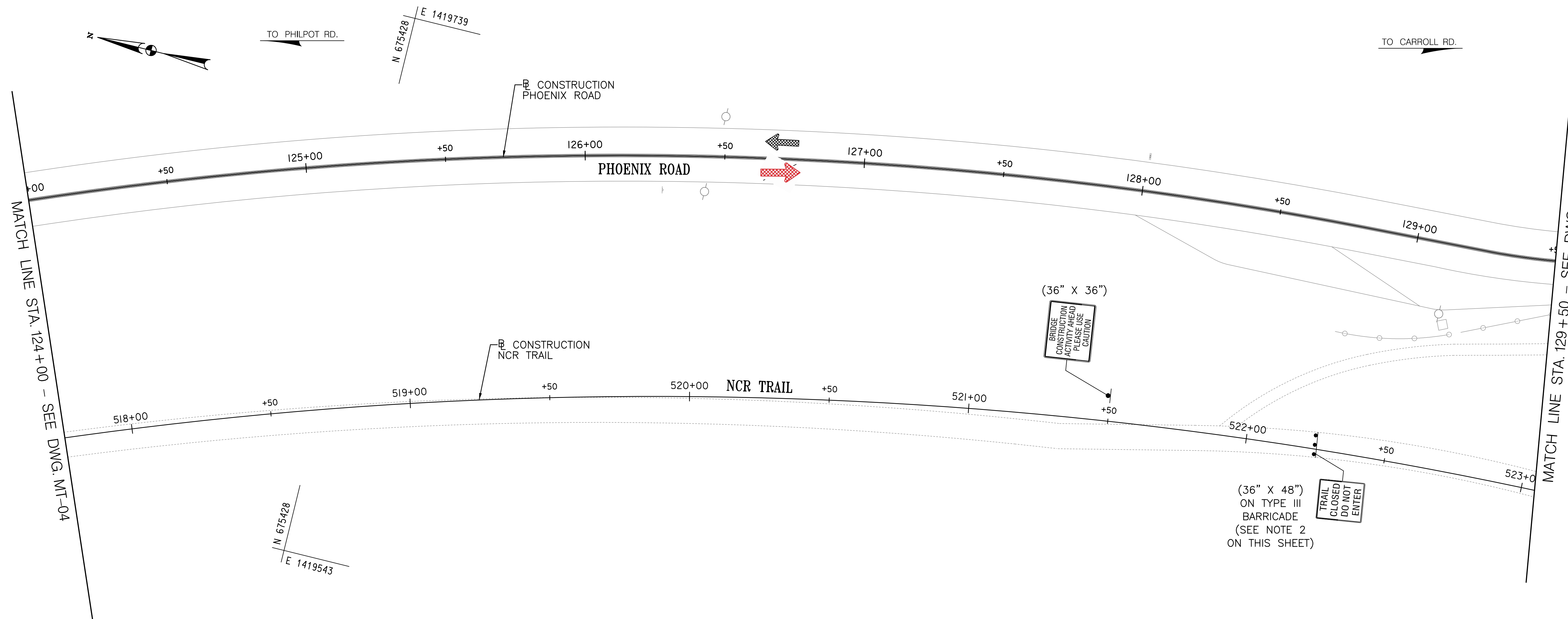
SCALE: 1"=20' DATE: FEBRUARY 2021
 TRANSPORTATION ENGINEERING DIVISION SHEET 32 OF 163

N:\Projects\2021\PEL-MD\1245_C08_01-Call\Design - JV w/ H&M\Transportation\2_Roadways\Drawings\Plan\MT-04-MT-04_Prelim_Rd.dwg
 AM/mb
 KAM/ASJ



DRAWN BY: AM/MB
 EXAMINED BY: KAM/ASJ

REVISIONS			
NO.	DESCRIPTION	DATE	BY



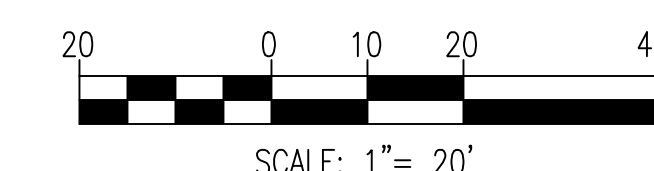
MAINTENANCE OF TRAFFIC LEGEND

- TRAFFIC FLOW ARROWS/LANE OPEN
- TRAFFIC FLOW ARROWS/LANE CLOSED
- WORK AREA
- TEMPORARY TRAFFIC SIGN AND SUPPORT
- TYPE III BARRICADE
- DRUMS FOR MAINTENANCE OF TRAFFIC (DRUM SPACING AS SHOWN ON PLANS)
- TRAFFIC BARRIER TWO-SIDED END TREATMENT AND CRASH CUSHION TYPE E FOR 30 MPH
- TEMPORARY PRECAST SINGLE FACE F-SHAPE CONCRETE BARRIER
- SIGN INSTALLED IN CURRENT PHASE

NOTES:

1. THE CONTRACTOR SHALL IMPLEMENT ROADWAY DETOUR SIGNAGE CONCURRENTLY WITH PHASE 1. THE CONTRACTOR SHALL NOT HAVE DETOUR SIGN CONFLICTIONS WHILE THE ONE WAY TRAFFIC OPERATION ON PHOENIX ROAD AND PHILPOT ROAD REMAINS OPEN. REFER TO DWG. TP-01 TO TP-07 FOR ADDITIONAL INFORMATION.
2. THE CONTRACTOR SHALL UNCOVER THE "TRAIL CLOSED DO NOT ENTER" SIGN AND CLOSE THE NCR TRAIL TO TRAIL USERS DURING INTERIM CLOSURE PERIODS FOR FACILITATING THE CONSTRUCTION ACTIVITIES. AT THE END OF THE INTERIM CLOSURE PERIOD, THE CONTRACTOR SHALL REMOVE ALL EQUIPMENTS AND MATERIALS WITHIN AND SURROUNDING THE NCR TRAIL PRIOR TO OPENING THE TRAIL. THE CONTRACTOR SHALL COVER THE "TRAIL CLOSED DO NOT ENTER" SIGN AND OPEN THE NCR TRAIL.

CROSS REFERENCES	
ITEM	DWG. NO.
GEOMETRIC LAYOUT	GS-01 TO GS-02
TYPICAL SECTIONS	TS-01 TO TS-03
SUPERELEVATION DETAILS	SE-01
PAVEMENT DETAILS	PD-01
TEMPORARY ROADWAY PLAN	TR-01 TO TR-03
ROADWAY PLAN	PS-01 TO PS-07
TEMPORARY ROADWAY PROFILE	PR-01
ROADWAY PROFILES	PR-02 TO PR-03
MISCELLANEOUS DETAILS	MD-01 TO MD-03
STORM DRAIN PROFILE	DP-01
STORM DRAIN SCHEDULE	DS-01
MAINTENANCE OF TRAFFIC PLAN	MT-01 TO MT-06
DETOUR PLANS (NOTES, PLAN, AND SIGN DETAILS)	TP-01 TO TP-09
SIGNING & PAVEMENT MARKING PLAN	SN-01 TO SN-08
CONDUIT PLANS (NOTES, PLAN, AND CONDUIT DETAILS)	UT-01 TO UT-12
GRADING, EROSION AND SEDIMENT CONTROL	SC-01 TO SC-14
DRAINAGE AREA PLAN	DA-01 TO DA-04
WATER QUALITY MAP	WQ-01
LANDSCAPING PLAN	LD-01 TO LD-10



PRIME AE
 PRIME AE Group, Inc.
 5521 Research Park Drive | Suite 300
 Baltimore, Maryland 21228
 P: 410 654 3790 F: 410 654 3791

PRELIMINARY

MT-05

CITY OF BALTIMORE
 DEPARTMENT OF TRANSPORTATION
 CONTRACT NO. TR10003
 SHA NO. BC 410030
 F.A.P. NO. STBG-3(640)E

REPLACEMENT OF BRIDGE NO. BC 6507
 ON PHOENIX ROAD
 OVER GUNPOWDER FALLS

MAINTENANCE OF TRAFFIC PLAN – PHASE 1
 STA. 124+00 TO STA. 129+50

SCALE: 1"=20' DATE: FEBRUARY 2021

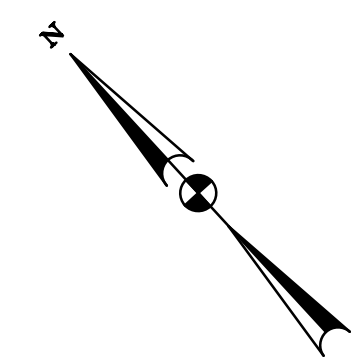
TRANSPORTATION ENGINEERING DIVISION | SHEET 33 OF 163

N:\Projects\2021\PEL-MT05-COB-COB-Call-Design-JV-w-H&V-Transportation\2-Baltimore\Drawings\MT-05_Prelim_R1.dwg



DRAWN BY: AM/MB
 EXAMINED BY: KAM/ASJ

REVISIONS			
NO.	DESCRIPTION	DATE	BY



TO PHILPOT RD.

TO MD 145

CARROLL ROAD

E 1420'50
N 6747'50

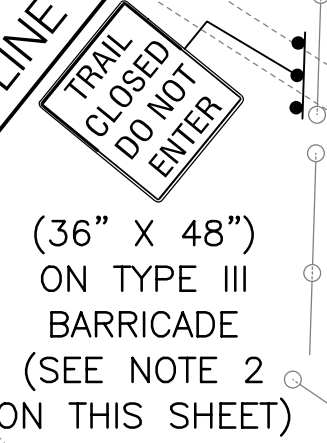
W20-1(1)
(36" x 36")



PHOENIX ROAD

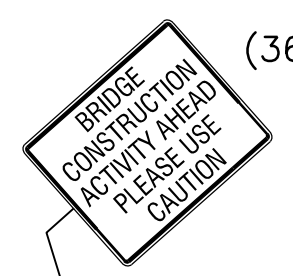
MATCH LINE STA. 129+50 - SEE DWG. MT-05

(36" X 48")
ON TYPE III
BARRICADE
(SEE NOTE 2
ON THIS SHEET)



CONSTRUCTION
PHOENIX ROAD

CONSTRUCTION
NCR TRAIL



(36" X 36")

E 1419'00
N 6747'50

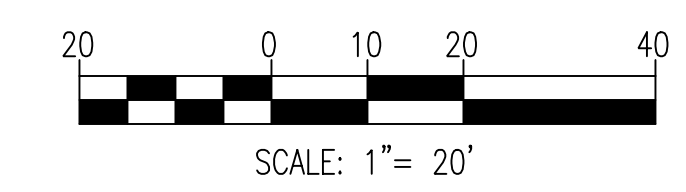
MAINTENANCE OF TRAFFIC LEGEND

- TRAFFIC FLOW ARROWS/LANE OPEN
- TRAFFIC FLOW ARROWS/LANE CLOSED
- WORK AREA
- TEMPORARY TRAFFIC SIGN AND SUPPORT
- TYPE III BARRICADE
- DRUMS FOR MAINTENANCE OF TRAFFIC (DRUM SPACING AS SHOWN ON PLANS)
- TRAFFIC BARRIER TWO-SIDED END TREATMENT AND CRASH CUSHION TYPE E FOR 30 MPH
- TEMPORARY PRECAST SINGLE FACE F-SHAPE CONCRETE BARRIER
- SIGN INSTALLED IN CURRENT PHASE

NOTES:

1. THE CONTRACTOR SHALL IMPLEMENT ROADWAY DETOUR SIGNAGE CONCURRENTLY WITH PHASE 1. THE CONTRACTOR SHALL NOT HAVE DETOUR SIGN CONFLICTIONS WHILE THE ONE WAY TRAFFIC OPERATION ON PHOENIX ROAD AND PHILPOT ROAD REMAINS OPEN. REFER TO DWG. TP-01 TO TP-07 FOR ADDITIONAL INFORMATION.
2. THE CONTRACTOR SHALL UNCOVER THE "TRAIL CLOSED DO NOT ENTER" SIGN AND CLOSE THE NCR TRAIL TO TRAIL USERS DURING INTERIM CLOSURE PERIODS FOR FACILITATING THE CONSTRUCTION ACTIVITIES. AT THE END OF THE INTERIM CLOSURE PERIOD, THE CONTRACTOR SHALL REMOVE ALL EQUIPMENTS AND MATERIALS WITHIN AND SURROUNDING THE NCR TRAIL PRIOR TO OPENING THE TRAIL. THE CONTRACTOR SHALL COVER THE "TRAIL CLOSED DO NOT ENTER" SIGN AND OPEN THE NCR TRAIL.

CROSS REFERENCES	
ITEM	DWG. NO.
GEOMETRIC LAYOUT	GS-01 TO GS-02
TYPICAL SECTIONS	TS-01 TO TS-03
SUPERELEVATION DETAILS	SE-01
PAVEMENT DETAILS	PD-01
TEMPORARY ROADWAY PLAN	TR-01 TO TR-03
ROADWAY PLAN	PS-01 TO PS-07
TEMPORARY ROADWAY PROFILE	PR-01
ROADWAY PROFILES	PR-02 TO PR-03
MISCELLANEOUS DETAILS	MD-01 TO MD-03
STORM DRAIN PROFILE	DP-01
STORM DRAIN SCHEDULE	DS-01
MAINTENANCE OF TRAFFIC PLAN	MT-01 TO MT-06
DETOUR PLANS (NOTES, PLAN, AND SIGN DETAILS)	TP-01 TO TP-09
SIGNING & PAVEMENT MARKING PLAN	SN-01 TO SN-08
CONDUIT PLANS (NOTES, PLAN, AND CONDUIT DETAILS)	UT-01 TO UT-12
GRADING, EROSION AND SEDIMENT CONTROL	SC-01 TO SC-14
DRAINAGE AREA PLAN	DA-01 TO DA-04
WATER QUALITY MAP	WQ-01
LANDSCAPING PLAN	LD-01 TO LD-10



PRIME AE
PRIME AE Group, Inc.
5521 Research Park Drive | Suite 300
Baltimore, Maryland 21228
P: 410 654 3790 F: 410 654 3791

PRELIMINARY

MT-06

CITY OF BALTIMORE
DEPARTMENT OF TRANSPORTATION
CONTRACT NO. TR10003
SHA NO. BC 410030
F.A.P. NO. STBG-3(640)E
REPLACEMENT OF BRIDGE NO. BC 6507
ON PHOENIX ROAD
OVER GUNPOWDER FALLS
MAINTENANCE OF TRAFFIC PLAN - PHASE 1
STA. 129+50 TO STA. 134+82

SCALE: 1"=20' DATE: FEBRUARY 2021
TRANSPORTATION ENGINEERING DIVISION SHEET 34 OF 163



DRAWN BY: AM/MB
EXAMINED BY: KAM/ASJ

N:\Projects\2021\PEL-MT\245_C08_01\1417_Transportation\2_Baldevops\Drawings\MT-06_Prelim_Rd.dwg